



Your complete simplified energy monitoring and analytics Solution ever increasing and difficult to predict energy costs are constantly challenging virtually every type and size of industry around the world. Decision makers need innovative solutions to drive down the energy costs, improve efficiency, and meet corporate sustainability goals. With DigiReach, you can connect to, manage and process data from virtually any remote energy device in a rapid and economic way. In three easy steps and without major upfront investment, we build your individual monitoring application with our IOT Platform, allowing you to receive the benefits of connecting your devices.

Energy monitoring provides integrated, real-time monitoring of various energy parameters with detail energy consumption, cost analysis with real-time recording and storage of data on cloud or systems.

Reports can be generated based on stored data on systems. It gives historical data analysis for predicative analysis and indicates peak load consumption. It gives load forecasting reliable precision and trends system loading based on adaptive steps. Energy management systems applications are designed to reduce energy consumption, increase electrical system reliability, improve utilization and optimise energy usage.

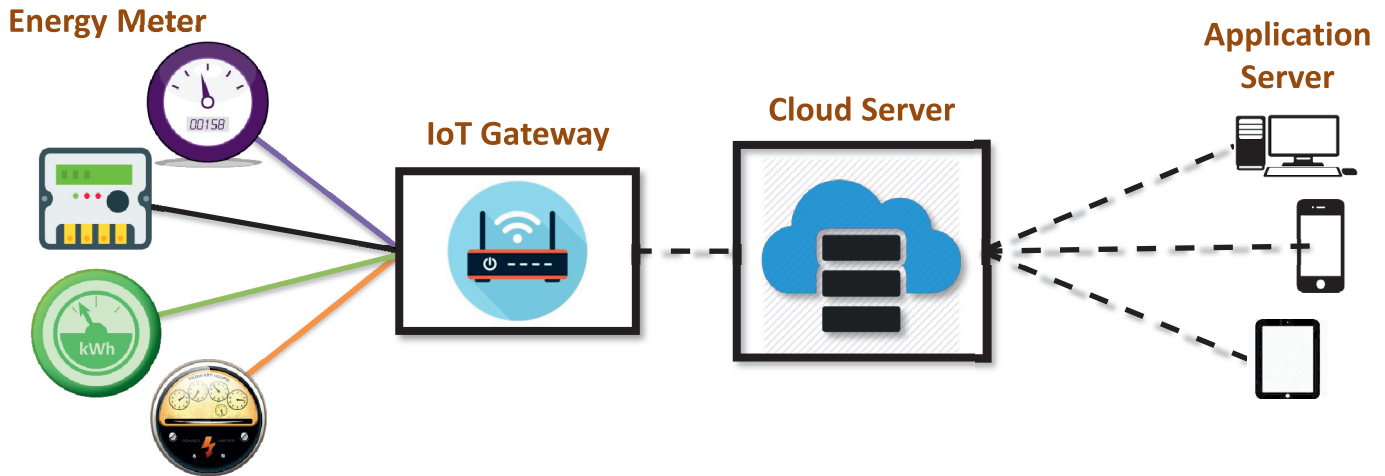
OUR OFFERING

Digital Reach provides complete IoT gateway / controllers from data acquisition, transmission (3G/LTE/Wi-Fi) and computing in order to help our customers use intelligent systems using our extensive resources. Customers can focus on their smart applications with minimal system integration effort. Our solution offerings & services are fully compatible with most of the applications and provide all the components customers need for building an intelligent system.

FEATURES

- ⇒ Real-time monitoring via IoT gateway
- ⇒ Provides customised reports in various user friendly formats
- ⇒ Web based multiple user access, setup.
- ⇒ Supports open communication protocol, Modbus
- ⇒ System alerts via SMS and email for user defined parameters and threshold levels.
- ⇒ Data storage on cloud for retrieval for long period.
- ⇒ Advance alarm management
- ⇒ Flexible graphical monitoring
- ⇒ Various communication method wire / wireless, GPRS, 3G, LTE,
- ⇒ Can be accessed from PC, Tablet and Smartphone

Energy Monitoring System (AMI/AMR)



ADVANTAGES

- ⇒ Improve overall system reliability
- ⇒ Demand side management
- ⇒ Predictive load forecasting trends.
- ⇒ Reduced system losses resulting in savings of overall cost.
- ⇒ By managing your overall energy consumption, you will be lowering your carbon footprint, saving money and helping the environment.
- ⇒ Minimize MW and Mvar losses
- ⇒ Minimise power factor penalties
- ⇒ Energy cost assessment
- ⇒ Supervisory control and advisory control methods adaption
- ⇒ Control overload / under / over voltage indication and alarm.

ABOUT US

Digital Reach is an IoT based solution company. We are experts in combining technical knowledge and insights from our extensive experience in the field to create Internet of Things (IoT) solutions, with our strong focus on innovation and integration with customer domain expertise. We create monitoring and control products and solutions that improve processes and services for our customers.

With our expertise is in embedded hardware development, embedded software development, system integration and project execution, in everything we do, we apply our values of respect and honesty through a commitment to teamwork and a high degree of responsibility to our customers, not only to satisfy but also to exceed our customer's expectations.



Digital Reach Pvt Ltd

502, Venus Atlantis, Prahlad Nagar, Ahmedabad 380015.
Mobile: 919898052205 | **Email:** sales@digireach.com
Website: www.digireach.com